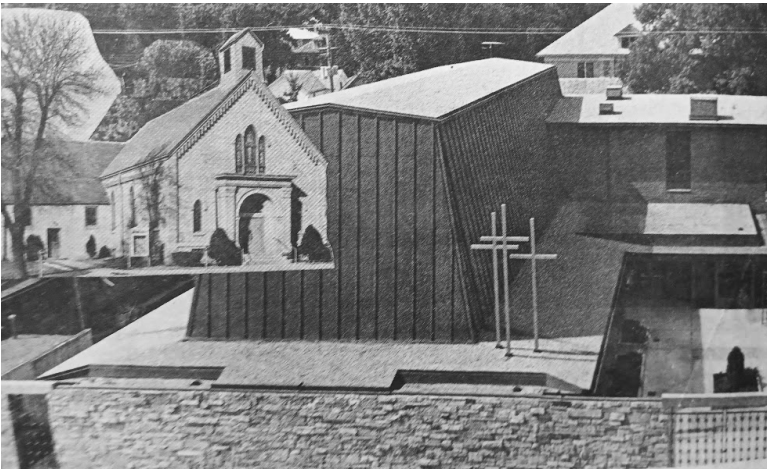


United Methodist Church of Luverne

150 years of Tradition



Condensed from prior anniversary writings

Humble Beginnings

There are no official records of the organizing of the First Methodist Episcopal Church of Luverne, MN. Memories, diaries, and Rock County Star Herald contribute to the history. Settlers came into Rock County in the 1870s. Families such as EH Bronson, TP William, John Grouts, GH Henton and many others organized in 1873. Reverend EH Bronson organized church, classes, and Sunday school in Grout's sod house. He was the first Pastor by appointment and first to preach in the school house on June 23, 1873.

Mergers

The Steen Salem Evangelical Church was organized in 1894 in a schoolhouse, building its church and dedicated in 1894 under Bishop Thomas Bowman. This church along with Pleasant View was known as the Luverne Field in conference. In 1946 the Evangelical and United Brethren Churches merged to become the Evangelical United Brethren Church. After 75 years a vote was to merge into The Luverne United Methodist Church.

The Ebenezer Evangelical Church also known as Pleasant View Church was visited by the first Evangelical preacher in 1872. Services were held in homes and a sod church until the first structure was built in 1875. Fire destroyed their church in 1917 with a brick building replacing it in 1918. A new church was built and relocated in Luverne in 1955. The old church was sold to the Methodist Church of Magnolia. Pleasant View Church merged June 1, 1966 into *The United Methodist Church of Luverne*.



Steen Church



Pleasant View Church

Building

1873-1877 were trying years including grasshoppers ravaging their farms and several years of drought. They did not lose faith. With quarterly conferences held and finally \$2000 raised and a deed recorded in 1877 on a corner of Main St and Freeman Ave. The Methodist church was the 2nd brick building in Luverne completed in October of 1877. Services, lower grade public school classes, and social activities were held in the basement. In 1888 the church was dedicated and completed with classrooms, decorations and debts paid.

In 1894 the parsonage was completed. In 1905, the church was again remodeled with a new entry and gallery. The ladies aid paid for new pews and seating in the basement and balcony.

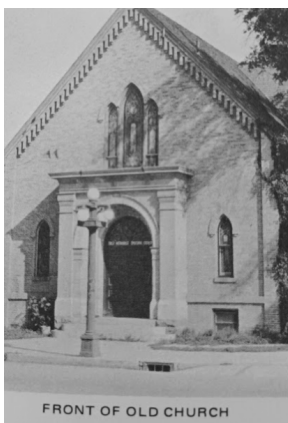
May 11, 1939 the Uniting Conference in Kansas City, MO, the Methodist Episcopal Church, the Methodist Episcopal Church South, and the Methodist Protestant Church were united into a unified Methodist Church. Luverne also dropped the Episcopal name and became known as the First United Methodist Church.

In 1948, an addition was required to the north along with a church office and Sunday school rooms to the west. The addition was not enough and soon, to accommodate growth, 2 services were implemented.

1963 A new parsonage in current location was consecrated.

In 1968, the congregation voted to replace the existing church with a new structure. The last service in the original building was held June 6, 1968. Services were held in the Zion Lutheran Church for 16 months during building. November 16, 1969 marked the first services in the new church.

The stained glass windows from the old church were used in decorating the chapel and the fellowship hall linking the old and the new church.



Methodist Episcopal Church prior 1969

Recent 50 Years

Our church family continues to blend faithfulness, tradition, and community. Our ministry on Main Street Luverne includes many activities including the long standing Friendship Club, mission trips, concerts, and potlucks. There were 50+ years of serving meals and then donuts at the Band Festival, UMYF Pie & Ice Cream Socials, yearly Youth Auction & hotdish dinner, and UMW Salad Luncheons. Activities at the City Park and services at the Palace Theater and The Lake (aka Creamery Pond).

God continues to carry us through a Covid pandemic that saw a long period closing in-house services and fellowship, but brought forward alternative ways to connect through technology.

We, the LUMC, supported and helped establish the Rock County Food Shelf, food collections and established community meals in 2014 in our fellowship hall each month. We continue in service sharing God's love in our community.

Changes and Growth

Our name has changed over the years from the M.E. (Methodist Episcopal) Society, to the Methodist Episcopal Church, to The First Methodist Church, to The United Methodist Church in Luverne.

We have grown from a Sod House, to a school house, to a brick building, to additions, to padded pews, heating, air

conditioning, technology, and live streaming services online.

We have grown from 10 charter members.

Gifts, Dedication & Talents

Many hours, dedication, and God's presence in those who built our community, congregation, and church.

The elders, council, trustees, teachers, custodians, singers, organists, pianists, officers of societies, group leaders, stewards and prayer warriors are the foundation of our church.

On behalf of the members of the
United Methodist Church of Luverne, MN,
a sincere thank you and heartfelt appreciation to the
Pastors & their families who have served us faithfully:

E.H. Bronson 1873-1877
J.W. Lewis 1877-1878
Peter Claire 1878-1879
H.W. Pease 1879-1880
Thomas Murrish 1880-1881
W.F. Means 1881-1882
Samuel Cates 1882-1883
T.W. Butler 1883-1884
E.R. Lathrope 1884-1885
David Seymore 1885-1886
N.B. Fort 1886-1889
Oliver Williams 1889-1892
Rev Harris 1892-1893
Rev. Brownell 1893-1894
T.H. Schickler 1894-1895
J.W. Cornish 1895-1897
T.A. Jones 1897-1901
C.A. Anderson 1901-1903
Wm Burns 1903-1905
E.J. Durham 1905-1906
L.H. Woodworth 1906-1908
Ross L. Finney 1908-1909
C.W. Morse 1909-1912
J.W. Webster 1912-1915
H.W. Bedford 1915-1920
W.H. Gower 1920-1923
J.A. Saunders 1923-1926
J.W. Robinson 1926-1929
E.C. Teachout 1929-1935
Edw G. Meierbachtol 1935-1942
David J Eastburn 1942-1944
R.E. Young 1944-1949
Carl Linden 1950-1956
Russell Huffman 1957-1958
Thomas Griffith 1958-1965
Donald F. Lyon 1965-1977
Virgil Coburn 1977-1982
Howard W. Bredesen 1982-1987
Carlton E. Bauer 1987-1992
Dennis Glad 1992-1999
Bart A. Fletcher 1999 - 2006
Donn Rakow 2006-2012
Theodora K. Hall 2012- present